



Vista Del Mar Middle School
Virtual Back to School Night
Regreso a classes

Tuesday , September 8th, 4 - 6 pm

Martes 8 de septiembre, 4 - 6 pm

Agenda

4:00 pm

- Welcome/**Bienvenida**
- Thank you Mrs. Bustos!/**¡Gracias Sra Bustos!**
- District and School Information/**Información del distrito y la escuela**
- Title 1 Information
/Información de título 1

4:30 to 6:00 pm

- Virtual Classroom Visits Period 1 thru 6 (No Advisory)/**Visitas a salones virtual Período 1 al 6 (sin asesoramiento)**
- Join Google Classroom with your child for each period/**Únase a Google Classroom con su hijo para cada período /**

IRENE HERRERA-CEVALLOS

The Principal/**La directora**



(619) 453-9125

irene.herrera-cevallos.sysdschool.org

TOGETHER



JUNTOS

THEME OF THE YEAR
**"TOGETHER
JUNTOS"**

FOUR PILLARS / CUATRO PILARES



SAFETY / SEGURIDAD

STATE & COUNTY COVID
SAFETY PROTOCOLS

COMMUNICATION / COMUNICACIÓN

DISTRICT HIGHLIGHTS, WEBSITES & SOCIAL MEDIA

CONNECTIVITY / CONECTIVIDAD

CHROMEBOOKS & INTERNET

HIGH QUALITY EDUCATION / EDUCACIÓN DE ALTA CALIDAD

STATE STANDARDS BASED CURRICULUM &
DAILY LIVE INSTRUCTION

5 - YIP & IL



SCHOOL MEAL PROGRAM

DRIVE THROUGH
WEEKLY MEAL PICK
UP/SERVICIO AL
CARRO SEMENAL
PARA RECOGER
COMIDAS



Week's Worth of
Breakfasts &
Lunches./Desayuno y
almuerzos de la
semana.

Safety Measures:

Contactless/Sin contacto

Wear Face Masks/Use mascarillas faciales

Social Distancing/Medidas de
distanciamiento social

SCHOOL MEAL PROGRAM / PROGRAMA DE COMIDA ESCOLARES



3 SCHOOL LOCATIONS / 3 UBICACIONES

San Ysidro Middle School Serving:

- SYMS
- OVHS
- VDM

Willow Elementary Serving:

- Willow
- Sunset

La Mirada Elementary Serving :

- La Mirada,
- Smythe
- Preschool students

SCHOOL MEAL PROGRAM / PROGRAMA DE COMIDA ESCOLARES



DAYS & TIMES / DIAS Y TIEMPOS

Wednesdays / Miércoles

@

11:30am - 1pm

INSTRUCTIONAL PROGRAM PHASES

PHASE I	PHASE II	PHASE III
<p>DISTANCE LEARNING ACADEMY (All Students)</p> <p>&</p> <p>VIRTUAL TUTORING OPTION (October 2020)</p> <p>&</p> <p>POSSIBLE DAY CAMP LIMITED OPTION</p> <ul style="list-style-type: none"> Pending state & county health care guidelines. (DATE: TBD) 	<p>DISTANCE LEARNING ACADEMY</p> <p>&</p> <p>In-person opportunities for targeted, specialized groups by grade or identified need</p>	<p>2 INSTRUCTIONAL PROGRAM OPTION CHOICES:</p> <p>DISTANCE LEARNING ACADEMY</p> <p>&</p> <p>LAUNCH OPTIONAL BLENDED LEARNING PROGRAM</p>
<p>DATE: Monday, August 17</p>	<p>DATE: When State & County Health Officials Allow Schools to Reopen</p>	<p>DATE: When State & County Health Officials Allow Schools to Reopen</p>

BIG 4 COVID SAFETY MEASURES

**Temperature &
Symptom Screenings**

1

Face Coverings

3

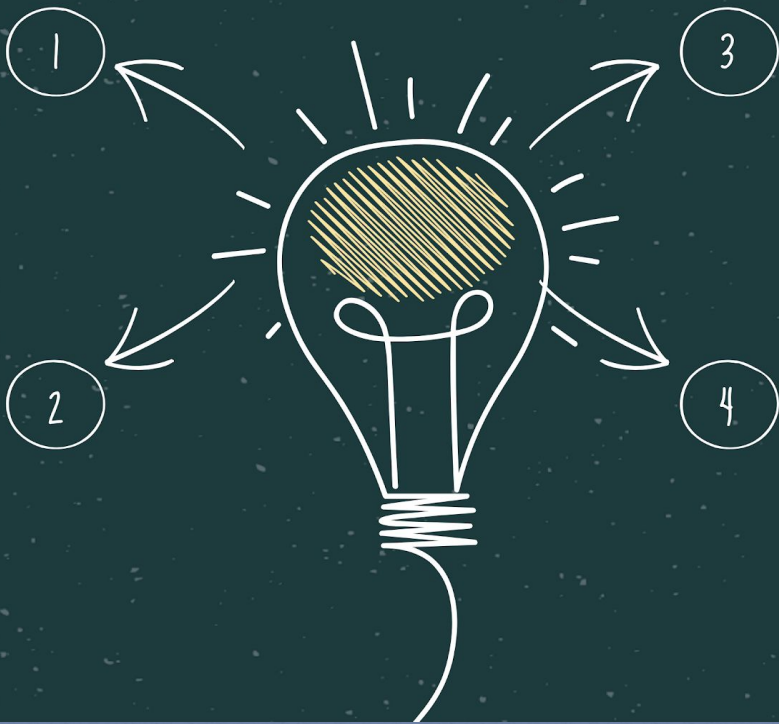
Physical Distancing

*"6 Foot Social
Distancing"*

2

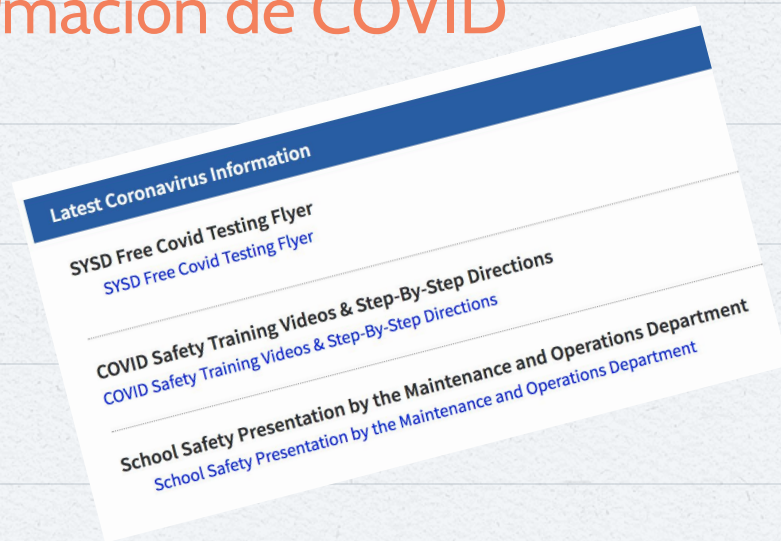
**Hand Washing &
Increased Sanitation**

4



Covid Safety Training/Entrenamiento de seguridad de Covid

Coronavirus Information/ Información de COVID



VDM'S COVID SAFETY PLAN/ PLAN DE SEGURIDAD

VDM Website / Sitio Web

VDM COVID-19 Prevention Plan for Schools: [VDM COVID-19 Prevention Plan](#)

Plan de prevención de COVID-19: [Plan de prevención en español](#)

VDM MISSION STATEMENT

Vista Del Mar Middle School provides students the opportunity to achieve, contribute and strive for excellence.



VDM LA DECLARACIÓN DE MISIÓN

La Escuela Intermedia Vista Del Mar proporciona a los estudiantes la oportunidad de lograr, contribuir y luchar por la excelencia.



VDM VISION STATEMENT



The vision of Vista Del Mar Middle School is to ensure a safe, supportive environment so that all students can reach their full potential. We are committed to providing a rigorous standards-based instructional program that engages students and prepares them to be successful in the path for college and career readiness for the 21st century.

VDM DECLARACIÓN DE LA VISIÓN



La visión de la escuela Vista Del Mar es garantizar un entorno seguro y de apoyo para que todos los estudiantes puedan alcanzar su máximo potencial. Estamos comprometidos a proporcionar un programa de instrucción riguroso basado en estándares que involucre a los estudiantes y los prepare para tener éxito en el camino hacia la preparación universitaria y profesional para el siglo XXI.



HOME OF THE SHARKS! / CASA DE LOS TIBURONES



OUR CAMPUS / NUESTRO CAMPUS



OUR SUPPORT STAFF / NUESTRO
PERSONAL DE APOYO

OUR SUPPORT STAFF/NUESTRO PERSONAL DE APOYO

Counselor & Psychologist



Ms. Garcia
Counselor



Mr. Aguilera
School Psychologist

OUR SUPPORT STAFF / NUESTRO PERSONAL DE APOYO



Mr. Stevon Curry
Campus Security



Ms. D'Oleire
Administrative
Secretary



Ms. Gonzalez
Health Clerk

Office Team



Ms. Bustos
Outreach
Consultant



Mr. Lopez
IMRA



Ms. Preciado
Administrative Clerk

OUR SUPPORT STAFF / NUESTRO PERSONAL DE APOYO

Custodians



Ms. Ramos



Ms. Macias
Lead Custodian



Mr. Macias

OUR SUPPORT STAFF / NUESTRO PERSONAL DE APOYO

Cafeteria



Ms. Del Real



**Ms. Ortega
Lead**



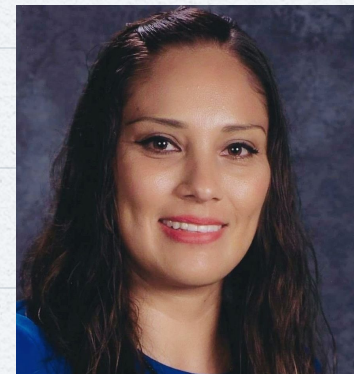
Mr. Monje



OUR SUPPORT STAFF/
NUESTRO PERSONAL DE APOYO

Ms. Villagomez

Campus Aides



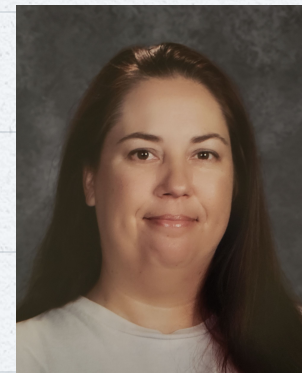
Ms. Valenzuela



Ms. Villaseñor



**Mrs. Olszewski
District Classified
Employee of the
Year!**



Mrs. Josef



Mrs. Soderberg

DAILY SCHEDULE, ATTENDANCE &
BEHAVIOR/

HORARIO DIARIO, ASISTENCIA Y
COMPORTAMIENTO



Middle School Distance Learning Student Schedule 2020/2021

	Monday Advisory & Periods, 1, 2, & 3	Tuesday Advisory & Periods 4, 5, & 6	Wednesday Advisory & Periods, 1, 2, & 3	Thursday Advisory & Periods, 4, 5, & 6	Friday Advisory & Periods 1, 2, 3, 4, 5, & 6	
8:15-8:30 15 Min	Get Ready for Online Learning	Get Ready for Online Learning	Get Ready for Online Learning	Get Ready for Online Learning	8:15-8:30	Get Ready for Online Learning
8:30 – 9:00 30 mins	Advisory	Advisory	Advisory	Advisory	8:30-9:00 30 Min	Advisory
9:00-10:15 75 min	Period 1	Period 4	Period 1	Period 4	9:00-9:20 20 Min	Period 1
10:15-10:30 15 Min	Break	Break	Break	Break	9:20-9:40 20 Min	Period 2
10:30-11:45 75 min	Period 2	Period 5	Period 2	Period 5	9:40-10:00 20 Min	Period 3
11:45-12:30 45 min	Lunch	Lunch	Lunch	Lunch	10:00-10:20 20 Min	Period 4
12:30-1:45 75 min	Period 3	Period 6	Period 3	Period 6	10:20-10:40 20 Min	Period 5
					10:40-11:00 20 Min	Period 6

7-8 Distance Learning Schedule

	Monday (P1,P2, P3)	Tuesday (P4,P5, P6)	Wednesday (P1,P2, P3)	Thursday (P4,P5, P6)	Friday (P1-P6) - Minimum Day	
15 min 8:15 – 8:30	Prep to Get Online	Prep to Get Online	Prep to Get Online	Prep to Get Online	15 min 8:15 – 8:30	Prep to Get Online
8:30AM	Student Start Time	Student Start Time	Student Start Time	Student Start Time	8:30AM	Student Start Time
30 mins 8:30 – 9:00	Advisory: Attendance* Synchronous SEL	Advisory: Attendance* Synchronous SEL	Advisory: Attendance* Synchronous SEL	Advisory: Attendance* Synchronous SEL	30 min 8:30 – 9:00	Advisory: Attendance* Synchronous SEL
P1 or P4 75 min 9:00 – 10:15	45 min Synchronous Direct Instruction & Video Posted for Asynchronous Option 30 min Teacher Led Small Group Support	45 min Synchronous Direct Instruction & Video Posted for Asynchronous Option 30 min Teacher Led Small Group Support	45 min Synchronous Direct Instruction & Video Posted for Asynchronous Option 30 min Teacher Led Small Group Support	45 min Synchronous Direct Instruction & Video Posted for Asynchronous Option 30 min Teacher Led Small Group Support	P1 - 20 min 9:00 – 9:20	HW Support Tutoring
15 min 10:15 – 10:30	BREAK	BREAK	BREAK	BREAK	P2 - 20 min 9:20 – 9:40	HW Support / Tutoring
P2 or P5 75 min 10:30 – 11:45	45 min Synchronous Direct Instruction & Video Posted for Asynchronous Option 30 min Teacher Led Small Group Support	45 min Synchronous Direct Instruction & Video Posted for Asynchronous Option 30 min Teacher Led Small Group Support	45 min Synchronous Direct Instruction & Video Posted for Asynchronous Option 30 min Teacher Led Small Group Support	45 min Synchronous Direct Instruction & Video Posted for Asynchronous Option 30 min Teacher Led Small Group Support	P3 - 20 min 9:40 – 10:00	HW Support Tutoring
45 min 11:45 – 12:30	LUNCH	LUNCH	LUNCH	LUNCH	P4 - 20 min 10:00 – 10:20	HW Support / Tutoring
P3 or P6 75 min 12:30 – 1:45	45 min Synchronous Direct Instruction & Video Posted for Asynchronous Option 30 min Teacher Led Small Group Support	45 min Synchronous Direct Instruction & Video Posted for Asynchronous Option 30 min Teacher Led Small Group Support	45 min Synchronous Direct Instruction & Video Posted for Asynchronous Option 30 min Teacher Led Small Group Support	45 min Synchronous Direct Instruction & Video Posted for Asynchronous Option 30 min Teacher Led Small Group Support	P5 - 20 min 10:20 – 10:40	HW Support Tutoring
1 Hour	PD/DRS Time	PD/DRS Time	PD/DRS Time	PD/DRS Time	P6 - 20 min 10:40 – 11:00	HW Support / Tutoring
					1 hour & 15 min	PD/DRS Time
					45 min	Lunch

*Attendance shall be taken daily at the beginning of each period (within Synergy) in accordance with Senate Bill 98.

*Monday Thru Friday 75 minute Classes/
Clases de 75 minutos de lunes a viernes*

45 min Synchronous Direct
Instruction
& Video Posted for Asynchronous
Option
30 min
Teacher Led Small Group
Support

The logo features the word "attendance" in a lowercase, sans-serif font. Below it, the word "MATTERS" is written in a larger, bold, uppercase, sans-serif font. A red, hand-drawn scribble, resembling a stylized "A" or a checkmark, is drawn over the "MATTERS" text. A thin red horizontal line is positioned below the scribble.

attendance
MATTERS

**3 absences =
Attendance Plan**

VDM School Rules/Reglas de la escuela



Sea seguro

Sea responsable

Sea respetuoso

Distance Learning Technology Rules & Guidelines/Reglas y pautas de la tecnología del aprendizaje a distancia

Distance Learning Rules & Guidelines

SAN YUBO SCHOOL DISTRICT
DISTANCE LEARNING TECHNOLOGY RULES & GUIDELINES

Guidelines for a Positive Distance Learning Environment
The purpose of distance learning is to allow students equitable access to continued internet based learning, educational materials, instructional activities, and to assess student's knowledge and understanding. The district's *Distance Learning Technology Rules & Guidelines* provide reasonable safeguards to limit the risks of the internet and digital platforms to students and teachers. This document provides technology rules and tips for students to follow during distance learning to ensure a safe learning environment.

SAFE	RESPECTFUL	RESPONSIBLE
<ul style="list-style-type: none">Use kind wordsUse technology as directed and safelyNever communicate with strangers onlineOnly post appropriate questions & comments in the chat boxFor privacy and safety, do not video or post photos of your home	<ul style="list-style-type: none">Follow teacher directions & guidanceBe respectful of your teacher and classmatesMute when not speakingListen attentivelyTake turns speakingRespect others' cultures, opinions & viewsBe present & avoid distractionsUse appropriate & respectful language	<ul style="list-style-type: none">Charge your device in advance or plug it inParticipate and be on time for virtual instruction, class meetings, & office hoursHave materials ready (paper, notebook, pencil/pen, calendar, etc.)Complete Study Packets & assignmentsAsk your teacher for help, if needed (during virtual instruction/meeting/office hour, email, during instruction, or possibly by phone)Ask clarifying questions

Distance Learning Technology Rules
In accordance with Board Policy 5163.4 Student Use of Technology, the district expects all students to use technology responsibly in order to stay safe and to avoid potential problems and liability. Below are the district's technology rules.

- Students do not access, post, display, or otherwise use material that is discriminatory, libelous, defamatory, obscene, sexually explicit, or disruptive.
- Students will not bully, harass, intimidate, or threaten other students, staff, or other individuals ("cyberbullying").
- Students will not disclose, use, or disseminate personal identification information (such as name, address, telephone number, Social Security number, or other personal information) of another student, staff member, or other person with the intent to threaten, intimidate, harass, or ridicule that person.
- Students will not intentionally divert attention or harm district technology or other district operations (such as destroying district equipment, placing a virus on district computers, adding or removing a computer program without permission from a teacher or other district personnel, changing settings on shared computers).

TEACHER EASE



TeacherEase
Web-based Software for Teachers

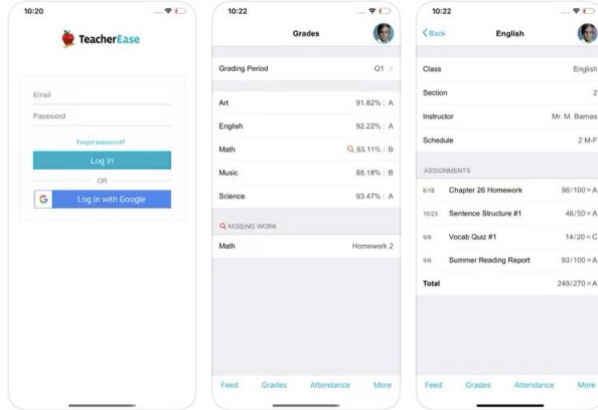


TeacherEase - Pare...

Education

GET

★☆☆☆ 23



- Monitor Student Progress/**Progreso del estudiante**
- Missing homework/**Falta tarea**
- Communication tool between parents and teachers/**Herramienta de comunicación entre profesores, alumnos y padres**



TITLE I / TITULO I

WHAT IS TITLE 1?

¿QUÉ ES TÍTULO 1?

Title 1 (Federal) program provides extra funding to eligible schools to improve the academic achievement of at-risk students.

Título 1 (Federal) es un programa que provee fondos adicionales para mejorar el logro académico de alumnos en riesgo académico en las escuelas que son elegibles.

HOW ARE SCHOOLS DESIGNATED AS TITLE 1 ?

¿CÓMO SE LE ASIGNA LA CLASIFICACIÓN DE TÍTULO 1 A LAS ESCUELAS?

Schools are eligible to be Title 1 if 35% or more of students in the school qualify for Free/Reduced lunch (based on lunch applications.)

Las escuelas son elegibles para ser escuelas de Título 1 si el 35% de los alumnos o más califican para recibir comidas gratuitas o a un precio reducido (en base a las solicitudes de comidas.)

HOW ARE TITLE 1 FUNDS USED?

¿CÓMO SE USAN LOS FONDOS DE TÍTULO 1?)

The school must focus Title 1 services on children who are failing, or most at risk of failing, to meet state academic standards.

Title 1 funds are used to provide services that will bring up the scores of those students (and all other students in a schoolwide program).

La escuela debe enfocar los servicios en estudiantes que están reprobando, o están en riesgo de reprobando, para que puedan lograr las metas estatales.

Los fondos del Título 1 se emplean para elevar los resultados de dichos alumnos (y todos los demás alumnos inscritos en un programa a nivel general).

SITE TITLE 1 GOALS

METAS ESCOLARES DE TÍTULO 1

To improve the academic achievement in English Language Arts (ELA), math, science, and social science.

Mejorar el rendimiento académico en artes de lenguaje inglés y matemáticas, ciencias y ciencias sociales.

SUPPLEMENTARY SERVICES

SERVICIOS COMPLEMENTARIOS

Title 1 programs and services must be supplemental to the core program provided by the district.

Los programas y servicios de Título 1 deben complementar al programa básico que provee el distrito escolar.

The San Ysidro School District provides all schools with highly qualified teachers, standards based curriculum and textbooks for core content classes.

En el distrito San Ysidro se proporciona a todas las escuelas maestros altamente calificados, currículum basado en los estándares y libros de texto para las materias básicas.

TITLE 1 OVERSIGHT

VIGILANCIA DEL TÍTULO 1

The School Site Council (SSC) reviews and approves the School's Single Plan for Student Achievement (SPSA) that outlines how the school will address the academic needs of their students and how the categorical budgets will be spent to support those needs.

El Concilio Escolar (SSC) revisa y aprueba el Plan Único para el Rendimiento Estudiantil (SPSA) que resume la manera como la escuela responderá a las necesidades académicas de los alumnos y el modo en que se gastarán los presupuestos categóricos para apoyar dichas necesidades.

SCHOOL SITE COUNCIL (SSC) REPS ARE: /
LOS REPRESENTANTES DEL CONCILIO ESCOLAR SON:

4 Teachers,

1 Classified Staff

3 students,

3 parents,

And the principal

4 maestros,

1 empleado clasificado,

3 alumnos,

3 padres de familia/tutores

y la directora,

DISTRICT ADVISORY COUNCIL FOR TITLE 1

COMITÉ CONSULTIVO DEL DISTRITO DE TITULO 1

Each school funded by Title 1 must elect a parent representative to represent the school at the District Parent Advisory Committee (DPAC) meetings.

Cada escuela que reciba fondos de Título 1 debe elegir un padre o madre de familia como representante de la escuela para las juntas de (DPAC) del distrito.

PARENT INVOLVEMENT POLICY

POLÍTICA DE PARTICIPACIÓN DE LOS PADRES DE FAMILIA

- Each Title 1 school and the district must have a Parent Involvement Policy. This can be found in the Student/Parent Handbook.
- *Todas las escuelas de Título 1 y del distrito, deben contar con una Política para la Participación de los Padres. Esta se puede encontrar en el manual de alumnos y padres.*

SCHOOL PERFORMANCE INDICATORS

INDICADORES DE RENDIMIENTO ACADÉMICO

- Chronic Absenteesim/*Absentismo crónico*
- Suspension Rate/*Indice de suspensión*
- English Learner Progress/*Progreso del aprendiz de inglés*
- English Language Arts/*Lengua y literatura en inglés*
- *Mathematics/Matemáticas*



DPAC & DELAC/DPAC & DELAC

DPAC - District Parent Advisory Committee/**DPAC** - Comité Asesor de Padres del Distrito

DPAC advises the Board of Education on family engagement activities and policies, improving actions and services for students in the district, and the Local Control and Accountability Plan (LCAP)/**DPAC** asesora a la Junta de Educación sobre las actividades y políticas de participación familiar, la mejora de las acciones y los servicios para los estudiantes en el distrito y el Plan de Responsabilidad y Control Local (LCAP) .

DELAC - District English Learner Advisory Committee/**DELAC** - Comité de Adquisición del Idioma Inglés.

DELAC is a committee for parents or other community members who want to advocate for English Learners/**DELAC** es un comité para padres u otros miembros de la comunidad que desean defender a los estudiantes de inglés

Nominations and Elections/ Nominaciones y Elecciones

**Nominations: September 9 to 11th/
Nominaciones del 9 al 11 de septiembre**

**Election: September 14th to 16th./
Elecciones del 14 al 16 de septiembre**

Virtual Classroom Visits



Period 1 4:30 - 4:43 pm

Period 2 4:45 - 4:58 pm

Period 3 5:00 - 5:13 pm

Period 4 5:15 - 5:28 pm

Period 5 5:30 - 5:43 pm

Period 6 5:45 - 5:58 pm

No Advisory

*Join with
your child's
google
links that
are used
each day.*

*Únase a los
enlaces de
Google de su
hijo que se
utilizan todos
los días.*



Thank you for
attending! / ¡Gracias por
asistir?



Go Sharks!